

E-5 Explore the World Using Google Earth & Online Projects



LORI ELLIOTT, Ed.D. 

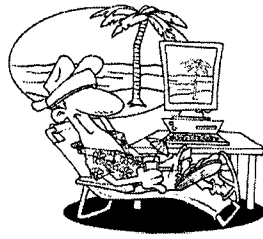
Lori is an energetic, passionate, National Board Certified classroom teacher and trainer. She has taught elementary students and uses her daily classroom experience to enhance her session presentations. Lori believes that integrating technology into instruction is a powerful way to enrich teaching and motivate students.

All resource materials not specifically identified as being reprinted from another source is copyright © 2011 by Lori Elliott. You may not distribute, copy, or otherwise reproduce any of this material for sale or for commercial use without written permission from the author.



Bring SDE presenters to your school!

SDE can bring customized training directly to your school. For more information call SDE's Professional Development Specialists at **1-877-388-2054** or visit **www.SDE.com/onsitetraining**



Google Earth
Explore the World!

What is Google Earth?

Google Earth is a free tool that provides virtual maps, globes, and geographic information. It must be downloaded to your computer. Visit <http://www.google.com/earth/index.html> to download the latest version.

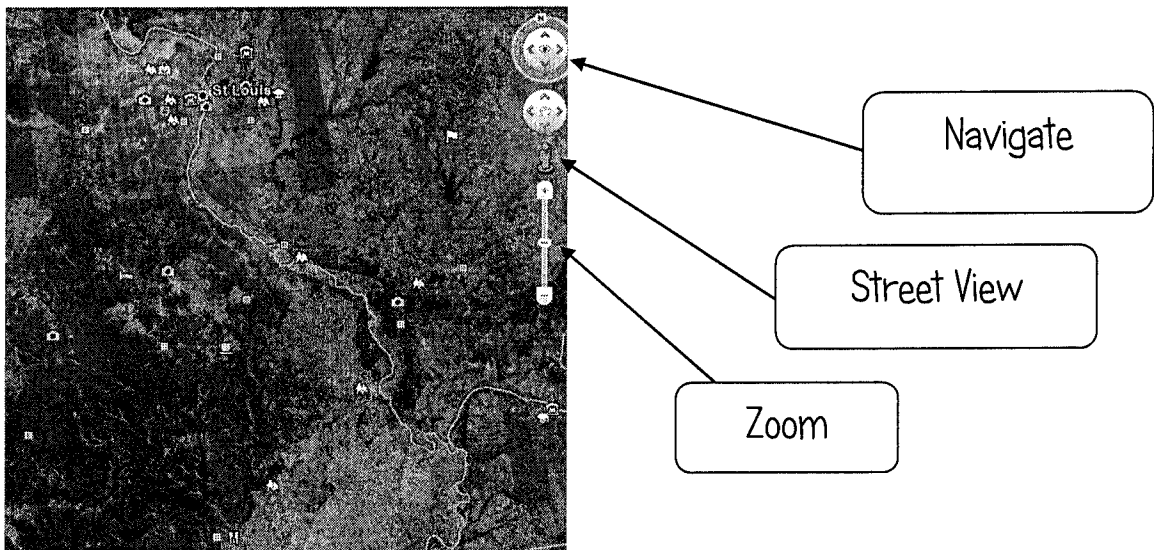
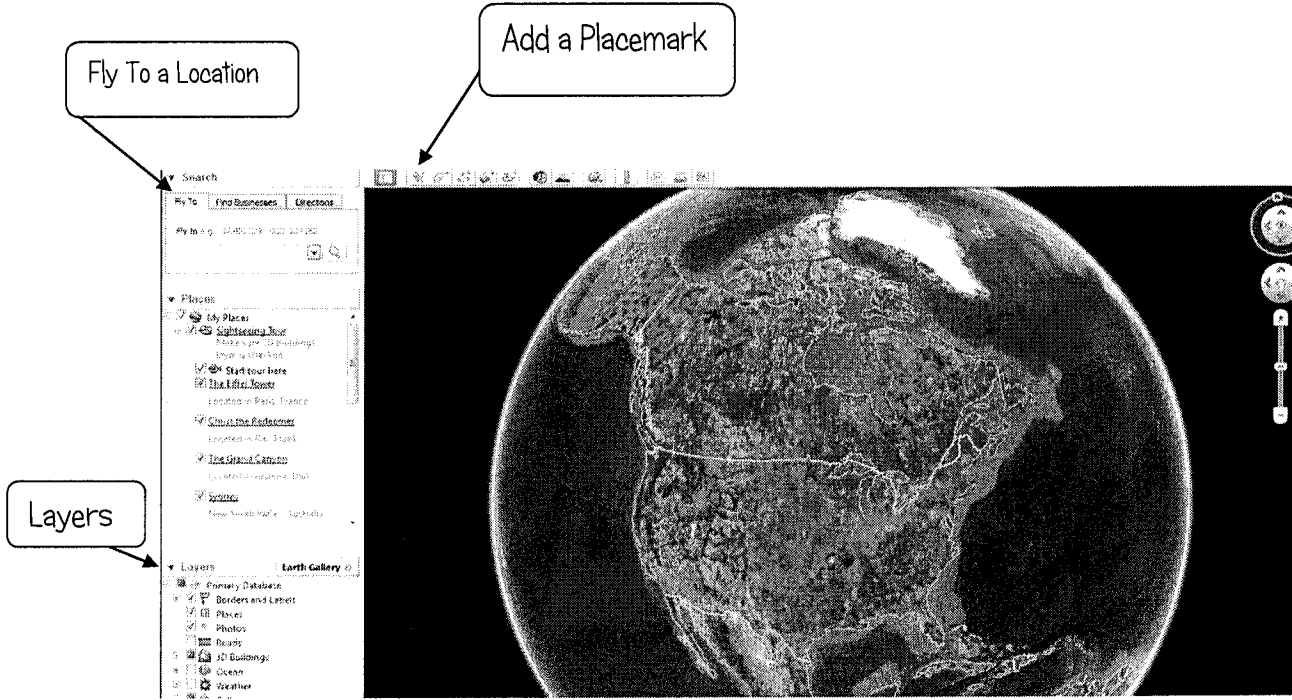
Why Use Google Earth in the Classroom?

- Build background knowledge
- Make learning real
- It is visual.
- It is interactive.

Curriculum Connections Using Google Earth:

- Landforms
- Countries and Continents and Oceans
- Measurement
- Reading Maps and Globes
- Research
- Discover Famous Landmarks
- Retrace the Travel of Literary Characters or Famous People
- Create Tours of Historical Events

The Basics



Things You Should Know

Google Earth Files are saved as either KMZ or KML. You must have Google Earth to view them.

You create tours by pinning placemarks at various locations. Look for the yellow pushpin.

You can easily move between Google Maps and Google Earth. Look at the last icon on the right side of the toolbar.

You can see the Sky, Mars, or the Moon. Use the planet icon.

You can add a path and even record the tour you create by using the Record a Tour icon that looks like a video camera.

To use Street View, you must zoom in close to the location and then use the Pegman that appears near the navigation to drag it to the location you want to view.

You can view what a location looked like in the past by using the historical imagery icon that looks like a clock.





Use Google Earth- Beginning, Middle, or End of Instruction

Beginning	<ul style="list-style-type: none">• Introduce Setting of a Book• Show the Location of Current Events• Fly to an Historical Landmark
Middle	<ul style="list-style-type: none">• Have students fly to places and learn facts• Students can explore a location by using layers• Measure Distances• Make a Tour of the Timeline of Someone's Life
End	<ul style="list-style-type: none">• Show a tour to review• Fly to places and ask questions to check for understanding• Look Closer at Locations with Street View

Take Flat Stanley to the Next Level by Using Google Earth and trace the path he travels.

Use <http://gelessons.com/graphics/flatstanleyicon.gif> as a placemark on your tour.



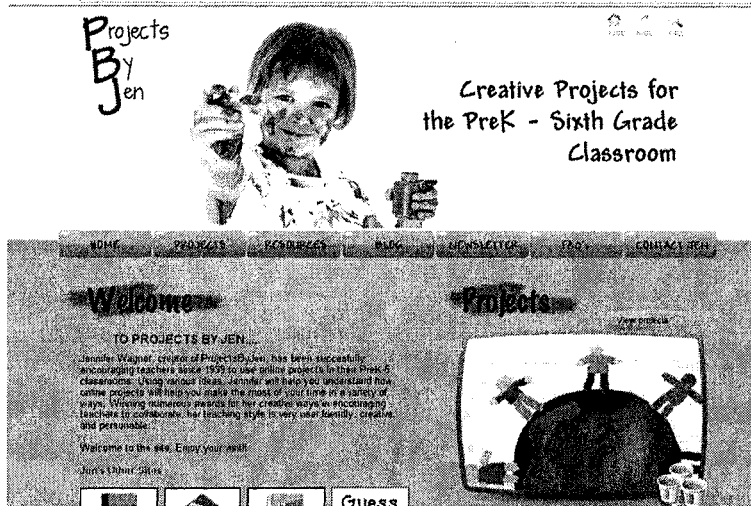
Helpful Resources

Site	Address	Use
Geography Awareness	http://www.mywonderfulworld.org	Make geography cross-curricular and real to students
Geo Greeting	http://www.geogreeting.com/#t	Write spelling words or messages using Google Earth
Google Lit Trips	http://www.googlelittrips.org/	Appreciate Literature the Google Earth Way
Real World Math	http://www.realworldmath.org	Teach Math Using Google Earth
Explore Planet Earth	http://dsc.discovery.com/convergence/planet-earth/google-tour/google-tour.html	Discovery Education Provides this Video/Google Earth Tour
Monster Milk Truck	http://earth-api-samples.googlecode.com/svn/trunk/demos/milktruck/index.html	Game for Google Earth
Google Earth Gallery and Showcase	http://www.google.com/earth/explore/showcase/	Find already created tours for museums, landmarks, and locations

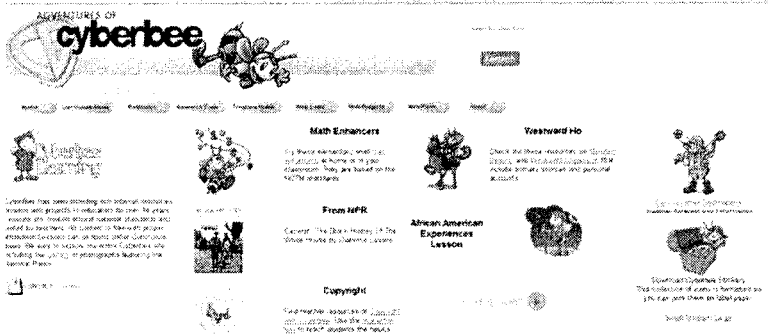


Online Projects

Projects by Jen: <http://www.projectsbyjen.com>



CyberBee: <http://www.cyberbee.com/>



More Resources:

<http://its.leesummit.k12.mo.us/studentprojects.htm>

<http://www.ecb.org/surf/projects.htm>

List of Related Citations

Google Earth

PRESENTED BY STAFF DEVELOPMENT FOR EDUCATORS (SDE)

Lori Elliott

Dorman, S. (2001). Teaching our first digital generation. *The Education Digest*, 66(8), 30-32.

Ferriter, B. (2009). Taking the digital plunge. *Educational Leadership*, 67(1), 85-86.

November, A. (2010). *Empowering students with technology*. Thousand Oaks, CA: Corwin.

Nussbaum-Beach, S. (2008). No limits. *Technology and Learning*, 28(7), 14-18.

Palfrey, J., & Gasser, U. (2008). *Born digital: Understanding the first generation of digital natives*. New York, NY: Basic Books.

Prensky, M. (2005). Listen to the natives. *Educational Leadership*, 63(4), 8-13.

Prensky, M. (2010). *Teaching digital natives: Partnering for real learning*. Thousand Oaks, CA: Corwin.

Richardson, W. (2008). Footprints. *Educational Leadership*, 66(3), 16-19.

Rosen, L. (2010). *Rewired: Understanding the iGeneration and the way they learn*. New York, NY: Palgrave & Macmillan.